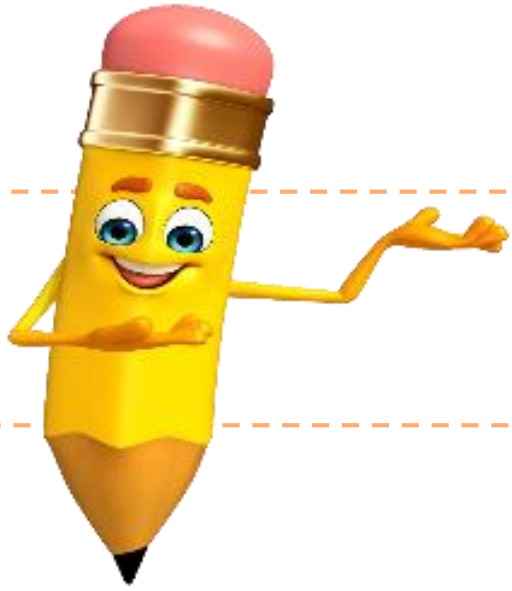


i - nö - nü



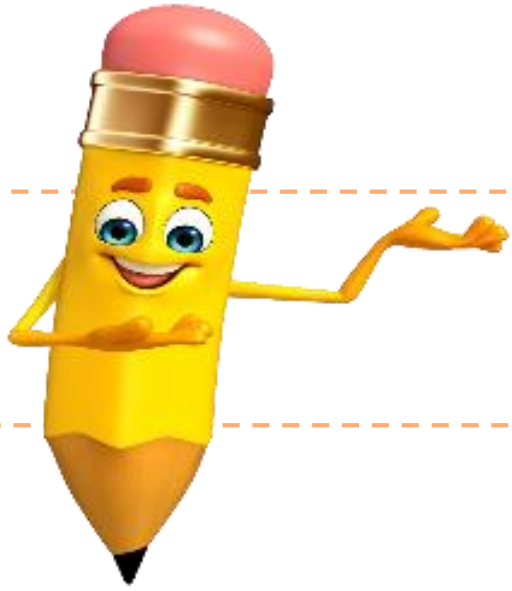
inönnü



köy



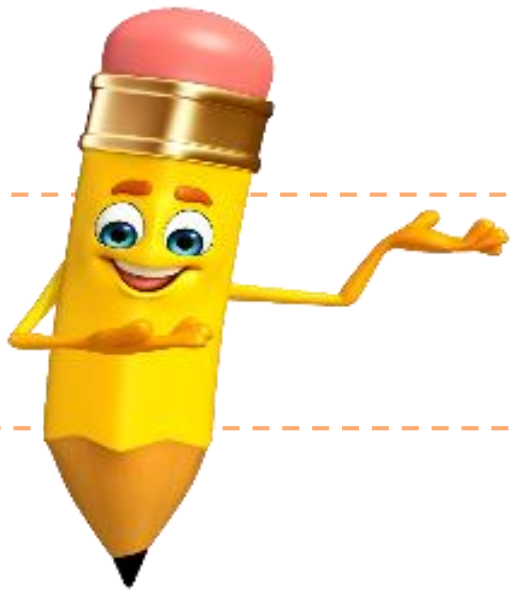
köy



kök



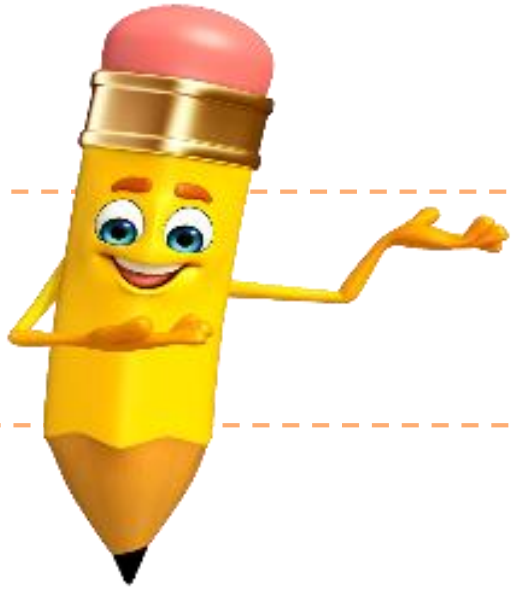
kök



yöön



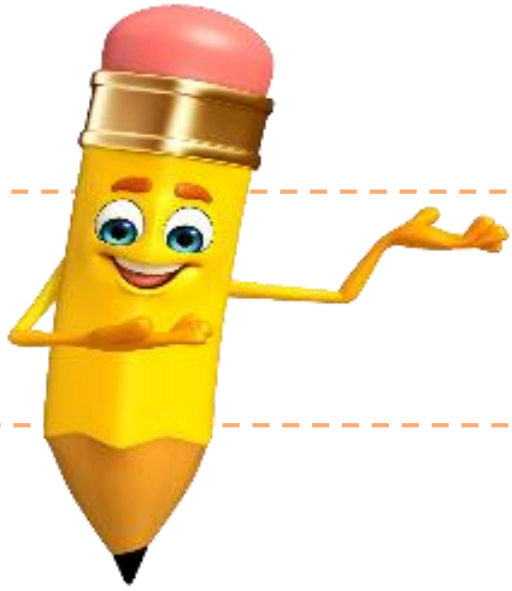
yöön



öne



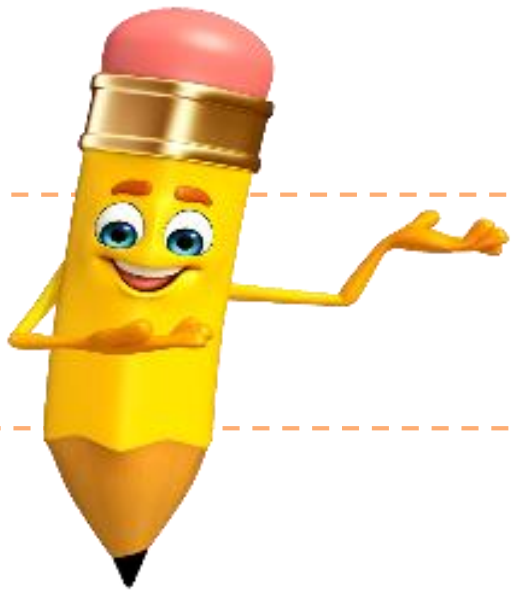
öne



öte



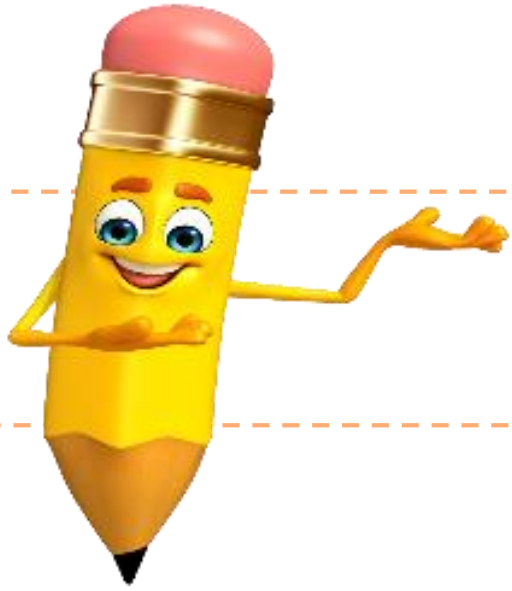
öte



ö n ü



ö n ü

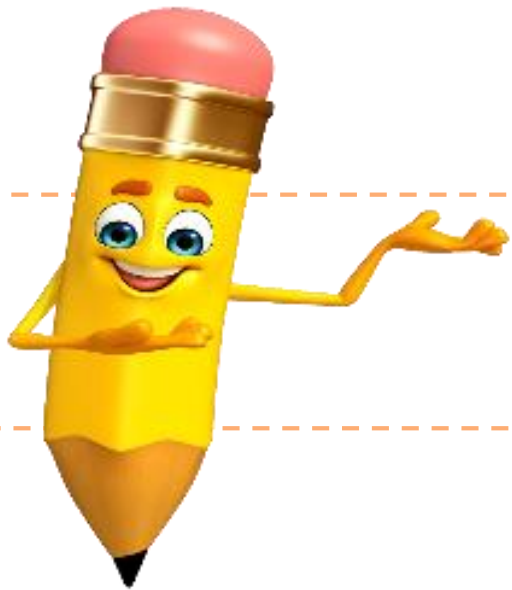


köö - le



kööle

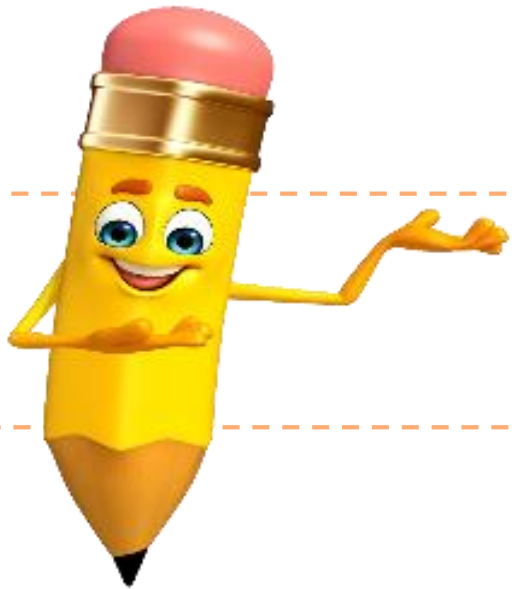




köö - ye



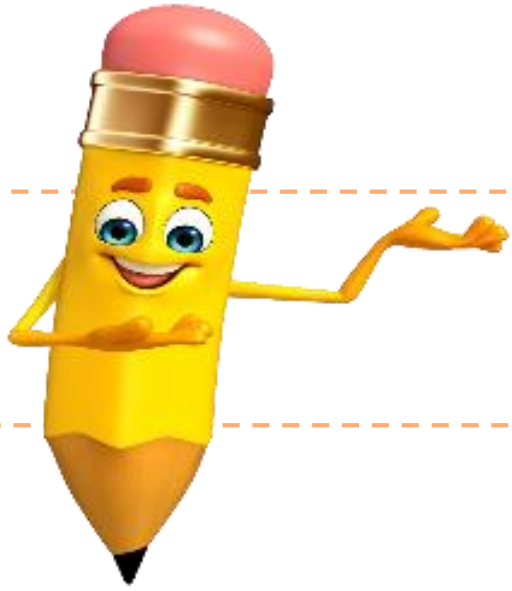
köyö



köö - tü



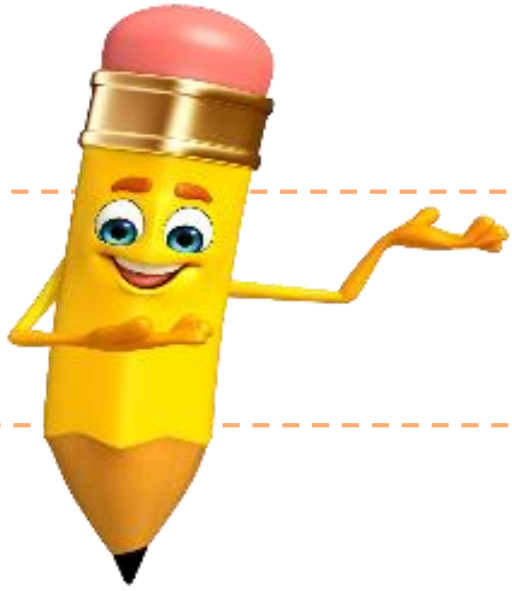
köötü



ön - le



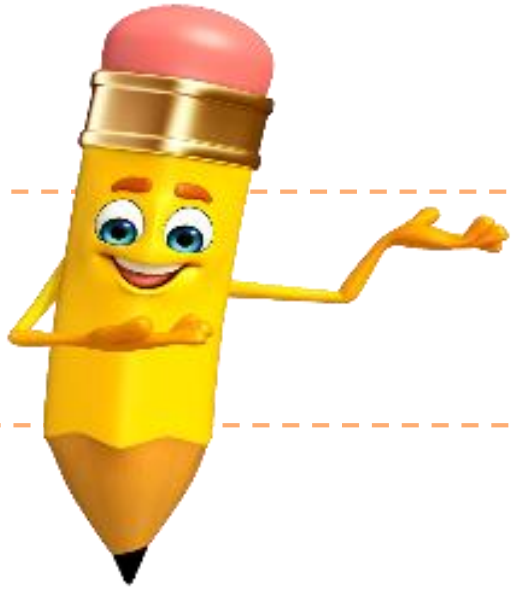
önle



ön - lem



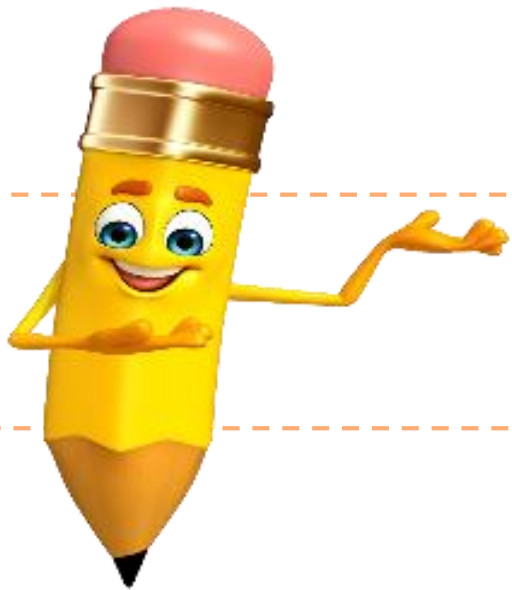
önlem



öt - mek



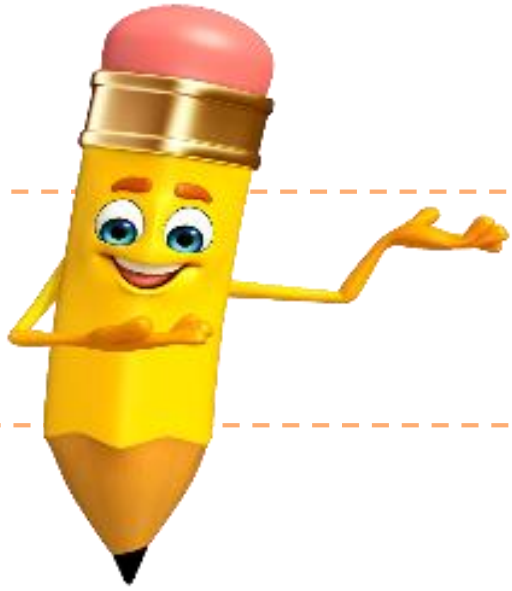
ötmek



öy - le



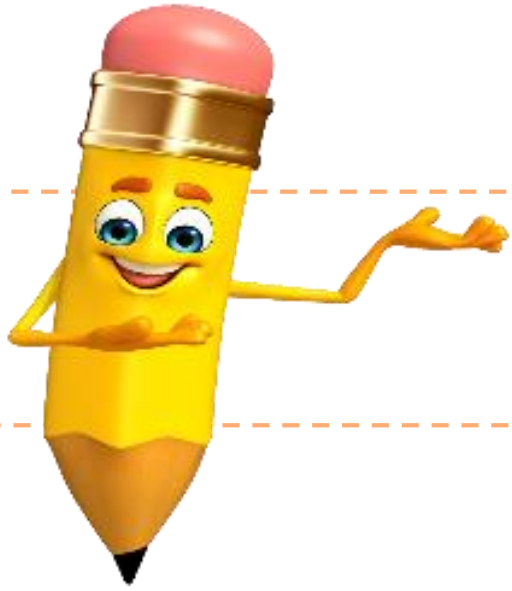
öyle



köy - lü



köylü

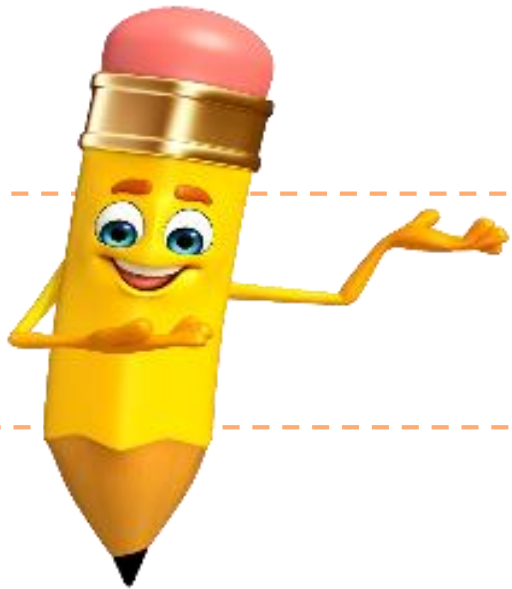


kök - lü



köklü

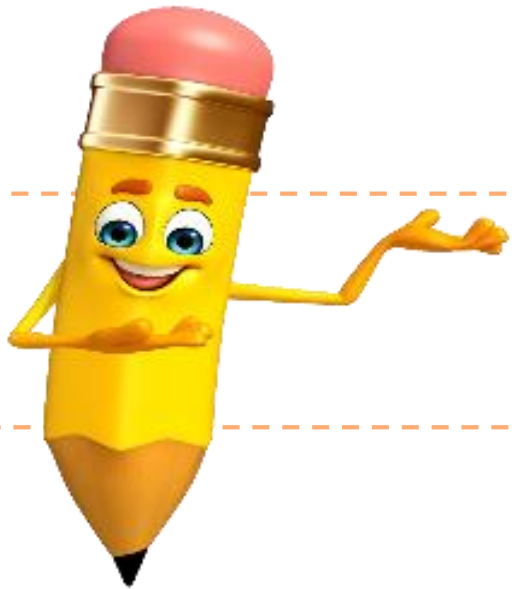




öy - kü



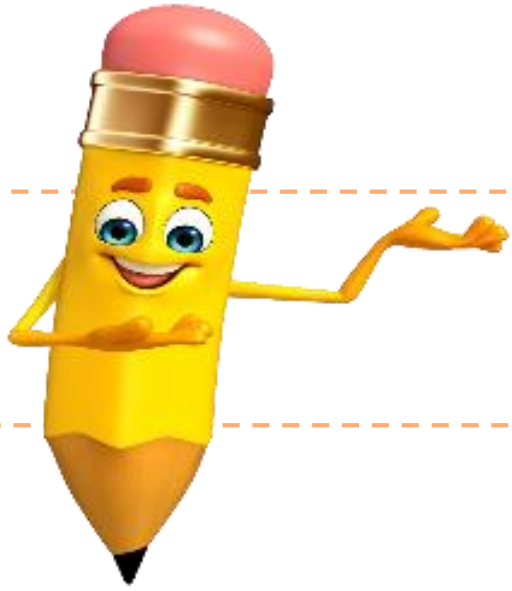
Öy - kü



ö - te - ki



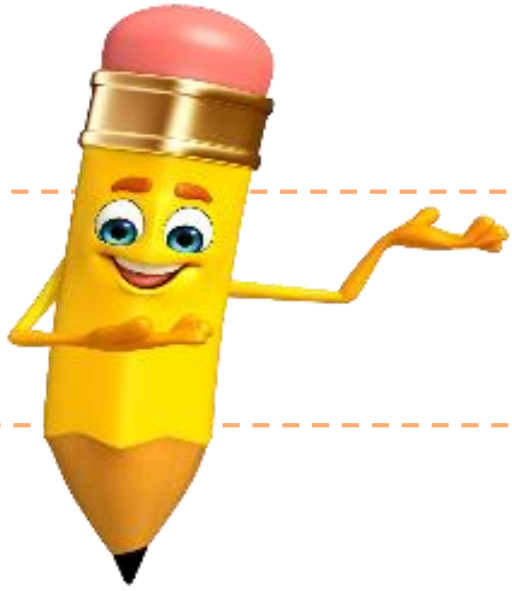
öteki



ö-nem-li



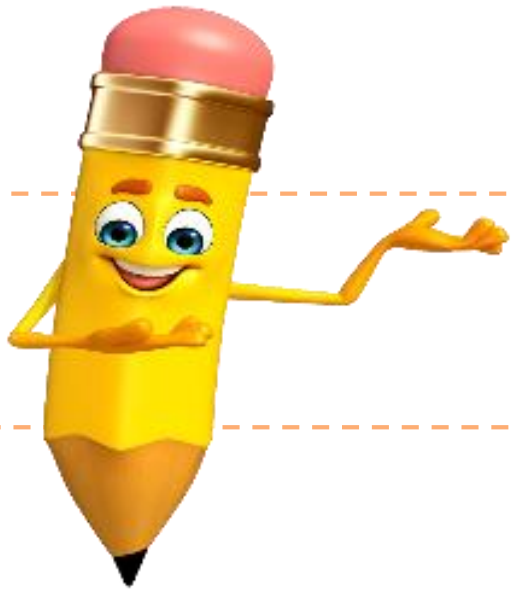
önemli



köö-tü-lük



köttülük



i - nö - nü



inönnü